

# AC Cross Flow Fans MF Series

## Impeller Length 300 mm



Ambient Temperature: -10~+60°C  
 Operating Voltage Range: ±10%  
 Materials  
 Motor Case: Die Cast Aluminum  
 Casing: Steel  
 Impeller: Aluminum  
 Overheat Protection: Built-in Thermal Protector  
 Bearings: Ball Bearings

### Specifications This product does not conform to RoHS Directive.



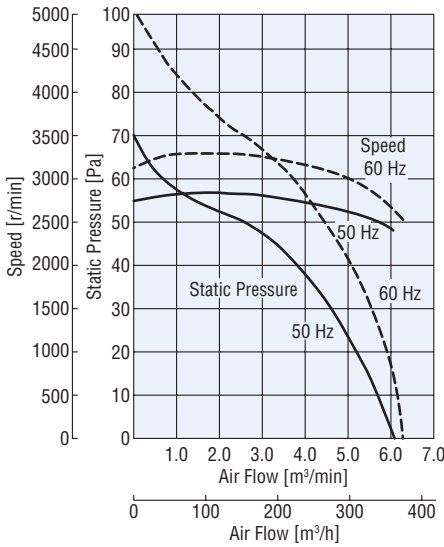
Model	Voltage VAC	Frequency Hz	Current A	Input W	Speed r/min	Max. Air Flow		Max. Static Pressure Pa	Noise Level dB (A)
						m³/min	m³/h		
<b>MF930-DC</b> <b>MF930B-DC</b>	Single-Phase 200	50	0.20	35	2500	6.0	360	74	58
	Single-Phase 200	60	0.25	45	2700	6.2	372	103	60
	Single-Phase 220	60	0.25	48	2950	6.6	396	106	62
	Single-Phase 230	50	0.20	40	2700	6.2	372	78	60
	Single-Phase 230	60	0.25	50	3000	6.8	408	106	63

● How to read specifications → Page E-17    ● Details of safety standards → Page G-2

The following items are included in each product.  
 Fan, Operating Manual

### Air Flow – Static Pressure Characteristics

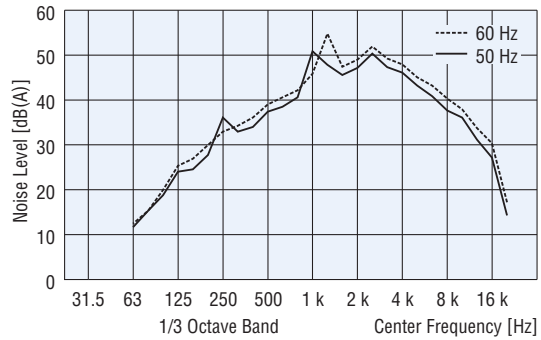
● How to read air flow – static pressure characteristics → Page E-18



### Frequency – Audible Noise Level (dB)

(Measured at a distance of 1 m from the intake side of fan)

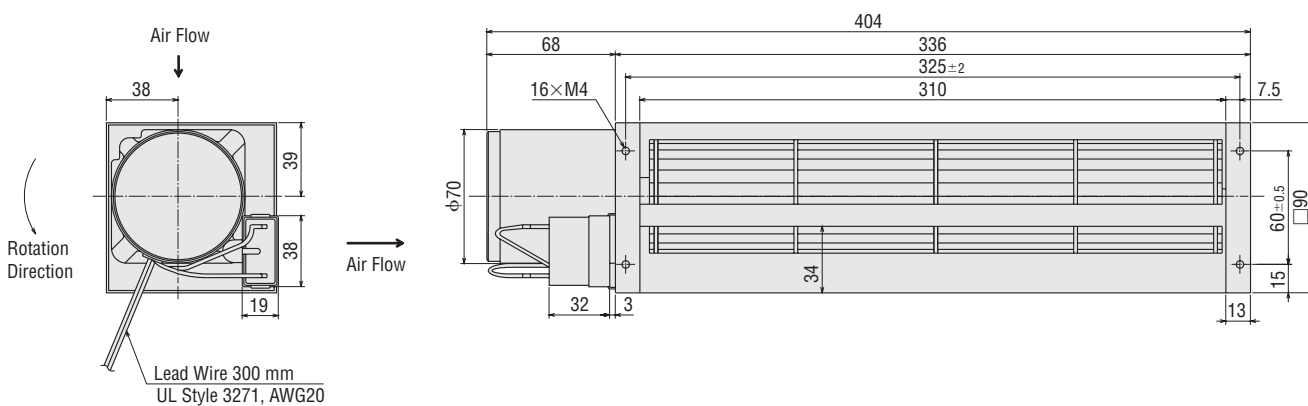
● How to read frequency – audible noise level → Page E-18



**Dimensions (Unit = mm)**

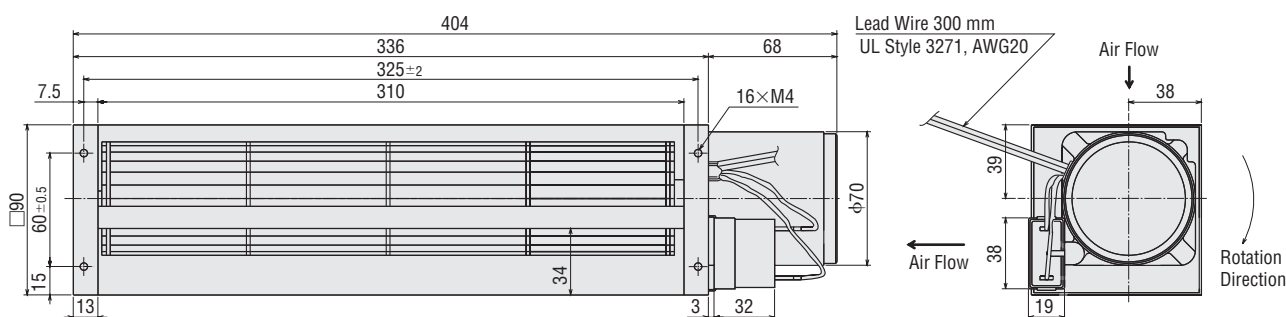
**MF930-DC**

Mass: 1.9 kg

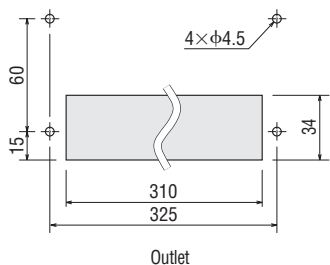


**MF930B-DC**

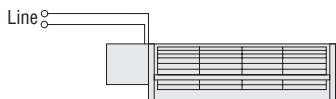
Mass: 1.9 kg



**Panel Cut-Out (Unit = mm)**



**Connection Diagram**



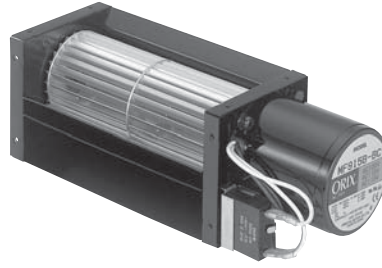
**Accessories**

Details → Page E-117

Product	Model	Safety Standards	Page
Finger Guard	<b>FG930D</b>	Conformed product	E-118

# AC Cross Flow Fans MF Series

## Impeller Length 150 mm



Ambient Temperature: -10~+60°C  
 Operating Voltage Range: ±10%  
 Materials  
 Motor Case: Die Cast Aluminum  
 Casing: Steel  
 Impeller: Aluminum  
 Overheat Protection: Built-in Thermal Protector  
 Bearings: Ball Bearings

### Specifications This product does not conform to RoHS Directive.



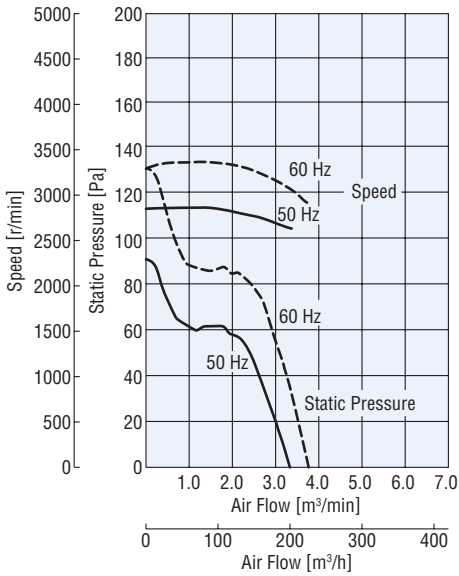
Model	Voltage VAC	Frequency Hz	Current A	Input W	Speed r/min	Max. Air Flow		Max. Static Pressure Pa	Noise Level dB (A)
						m³/min	m³/h		
<b>MF915-DC</b> <b>MF915B-DC</b>	Single-Phase 200	50	0.20	30	2650	3.4	204	88	60
	Single-Phase 200	60	0.25	40	2950	3.7	222	127	63
	Single-Phase 220	60	0.25	42	3200	4.0	240	132	64
	Single-Phase 230	50	0.20	33	2800	3.6	216	92	61
	Single-Phase 230	60	0.25	43	3250	4.1	246	132	64

● How to read specifications → Page E-17    ● Details of safety standards → Page G-2

The following items are included in each product.  
 Fan, Operating Manual

### Air Flow – Static Pressure Characteristics

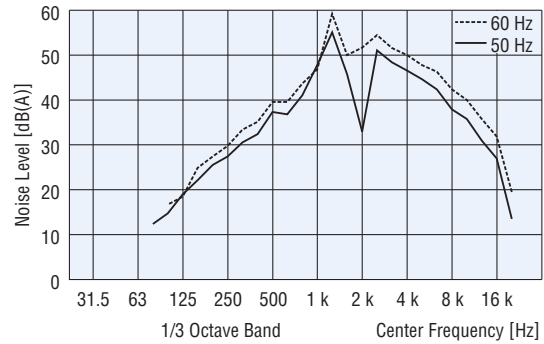
● How to read air flow – static pressure characteristics → Page E-18



### Frequency – Audible Noise Level (dB)

(Measured at a distance of 1 m from the intake side of fan)

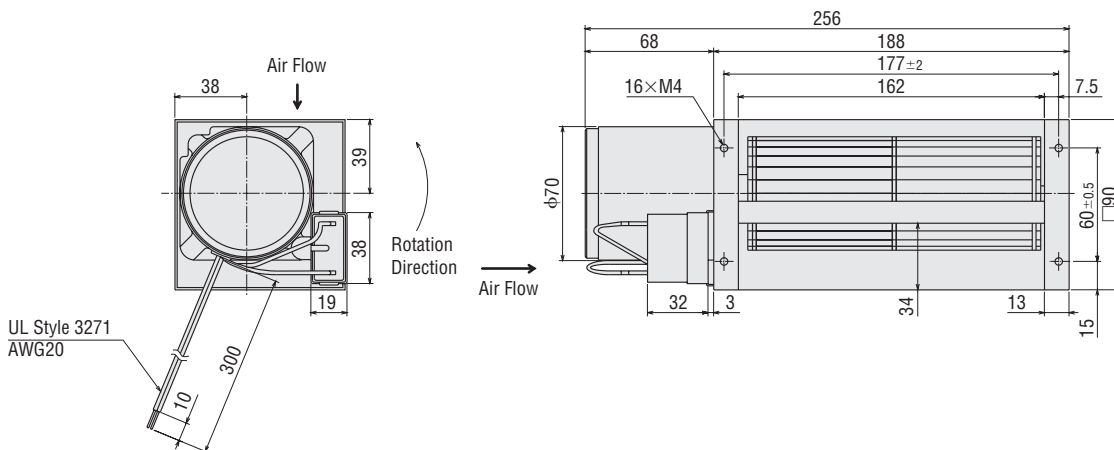
● How to read frequency – audible noise level → Page E-18



**Dimensions (Unit = mm)**

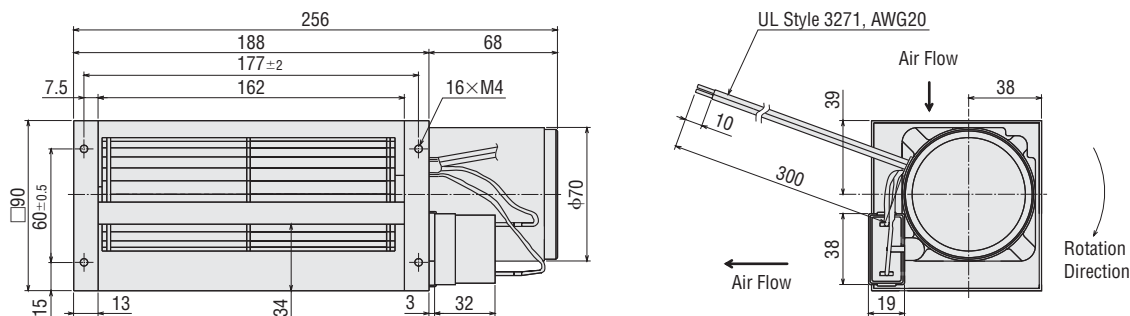
**MF915-DC**

Mass: 1.7 kg

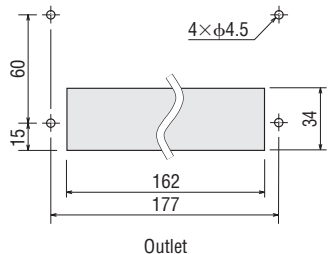


**MF915B-DC**

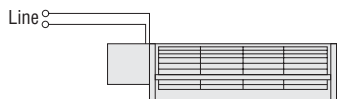
Mass: 1.7 kg



**Panel Cut-Out (Unit = mm)**



**Connection Diagram**



**Accessories**

Details → Page E-117

Product	Model	Safety Standards	Page
Finger Guard	<b>FG915D</b>	Conformed product	E-118